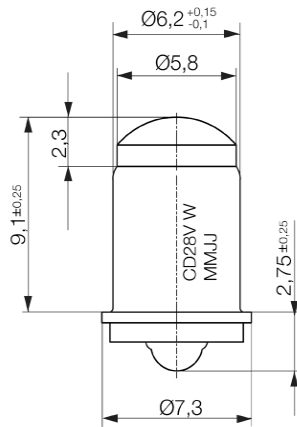


# PRODUCT DATA SHEET

T-1 3/4 SHORT MIDGET FLANGE LED LAMP

MLED387-1354



All dimensions in mm

Design Voltage:	VACDC	28
Current Consumption:	mA	14
Power Consumption	mW	392
Lower Threshold Voltage:	V	9.0
Light Output: (@ I <sub>F</sub> =14mA)	mcd	450
Viewing Angle:	Degrees	100°
Colour Appearance:	White	
Colour Temperature:	°K	6,500 approx.
CIE Colour	x	0.303 – 0.333
Co-ordinates (1931):	y	0.277 – 0.377
Operating Temperature:	°C	-30 / +70
Storage Temperature:	°C	-40 / +100
Design Life:	Hours	50,000



## Notes:

- 1) SX6s nickel-plated base to IEC61-1, data sheet 7004-61-x.
- 2) Lamp shall enter a cylindrical hole (gauge) 13.5mm Min. deep x diameter Ø6.375 + 0.005mm.
- 3) LED type: White InGaN SMD.
- 4) Lamp will not operate or glow below lower threshold voltage of 9.0V.
- 5) CIE colour-coordinates according to respective colour bin rankings.
- 6) Operating Voltage: 24-28VACDC with bi-polarity.
- 7) Design Life: 50,000 hours @ 25°C, referenced against laboratory conditions for the discrete SMD LED and the known degradation of light output over time and operating temperature.
- 8) Marking: Lamp base to be marked "CD28V W" with date code.
- 9) RoHS compliant.
- 10) Special version for operation at 30.0-30.5VDC available upon request.

Issue Number:	4C	4D	4E	1F	
Issue Date:	23.04.2010	20.5.2011	15.6.2011	18.2.2013	
Issued By:	jls	jls	jls	jls	
	Initial design & prototype samples build		preliminary production	Solder height change	